



NetID Information Session



NET ID Changes for Banner and ODS

JULY 24, 2023 – JUNE 30, 2024

Changes that will impact you on July 24, 2023

WEID_DIR_PERSON_00 (Banner) and WEID_DIR_PERSON_00_MV (ODS)

Columns that will be NULL for new Net Id's – Fort Collins ID's Only

- INT_REF_ID_EIDDATA
- INT_REF_ID_ISIS
- ISIS_DATA_FOUND
- ASSOC_DATA_FOUND
- SPOUSE_NAME
- PRIVACY_SPOUSE
- HRS_INACTIVE_DATE, ARIES_INACTIVE_DATE, ISIS_INACTIVE_DATE, ASSOC_INACTIVE_DATE
- WEB_PAGE
- ADMIN_ACCOUNT_FLAG
- STUDENT_ENROLLED_INDICATION – midPoint does not have

Changes that will impact you on July 24, 2023

WEID_DIR_PERSON_00 (Banner) and WEID_DIR_PERSON_00_MV (ODS)

Columns to note:

- EMAIL_ADDRESS – there will be just one email address and it will be the same as PROPER_NAME_ADDRESS
 - Proper_name_address for example: first.last@colostate.edu or first.middle.last@colostate.edu
- ACCOUNT_TYPE – hard coded to 'P'.
 - **There are no secondary assignments**
 - **There will be no inactive accounts**
 - 500K + prior to July 24. 100K + on July 24

If you use any of the following ODS tables or views, check for NULL fields

TABLES

- ▶ csuban.csus_weid_dir_person_00_mv

VIEWS

- ▶ csuban.csug_directory_all
- ▶ csuban.csug_directory_eid
- ▶ csuban.csug_directory_privacy

ODS Objects that use WEID data as a source

TABLES

- ▶ csuban.csus_studio_abroad_mv
- ▶ csuban.weid_dir_person_00_mv

VIEWS

- ▶ kfs_user.csuf_employee_primary
- ▶ csuadmin.csu_active_data_steward
- ▶ csudgm.grad_pd_advising
- ▶ csudgm.csud_person
- ▶ csuhr.csuh_employee_general
- ▶ csuhr.csuh_fmhis_emp_list
- ▶ csuban.csuh_faculty_patron_v
- ▶ Csuban.csus_student_patron_fal
- ▶ Csuban.csus_student_patron_smr
- ▶ Csuban.csus_student_patron_spr
- ▶ Csuban.csus_greek_membership
- ▶ Csuban.csus_sec_delivery_fmt_stg

Live Lag/Dead Lag versus NetID Life Cycles

- ▶ In eID, there is a Live Lag start date and a Dead Lag start date
 - ▶ Live Lag begins when a person has no active affiliations (Student, Applicant, Employee, Associate association). A person is given a grace period, when their eID is kept active", based on what associations
 - ▶ 30-45 days for an Applicant
 - ▶ 1 year for a Student
 - ▶ 30 days for an employee
 - ▶ 30 days for an associate
 - ▶ So each association a person has to be tracked as to when it ended and how long of a "live lag" time frame it gets in order to determine the maximum time frame to keep them "alive" before their account is inactivated.
 - ▶ Dead Lag
 - ▶ When an eID is no longer kept active
- ▶ In midpoint the life cycle process is being simplified to a person being kept active for 1 year since a person's last active association with the Universities (currently Fort Collins or Pueblo) as a Student, Applicant, Employee, or Associate.
- ▶ In either case a Retiree gets to keep their eID or midPoint account active for as long as they live.

What you need to do between now and July 20, 2023

TEST, TEST, TEST

- ▶ BANPPRD/ODSPPRD
 - ▶ Run your jobs/sql to test process will still work
- ▶ ODSPROD
 - ▶ Temporary views will be available June 27, 2023 to start data validation between current data and July data
- ▶ Report ODS issues to IS DL: Team - ODS and BI <is_dl_team_-_ods_and_bi@Mail.Colostate.edu>
- ▶ Sign Off On Your Testing
 - ▶ After Go Live on July 24, 2023 we will address issues at our earliest possible availability.
 - ▶ We are expecting our ODS customers to do adequate testing and report issues before Go Live.

What we need you to do between now and July 20, 2023 cont.

▶ ODSPROD

- ▶ Do data validation with old and new temporary views
 - ▶ kfs_user.csuf_employee_primary vs. kfs_user.csuf_employee_primary_midp
 - ▶ csuadmin.csu_active_data_steward vs. csuadmin.csu_active_data_steward_midp
 - ▶ csudgm.grad_pd_advising vs. csudgm.grad_pd_advising_midp
 - ▶ csudgm.csud_person vs. csudgm.csud_person_midp
 - ▶ csuhr.csuh_employee_general vs. csuhr.csuh_employee_general_midp
 - ▶ csuhr.csuh_fmismp_list vs. csuhr.csuh_fmismp_list_midp

▶ ODSPROD

- ▶ Do data validation with old and new temporary views
 - ▶ csuban.csuh_faculty_patron_v vs. csuban.csuh_faculty_patron_v_midp
 - ▶ csuban.csus_student_patron_fal vs. csuban.csus_student_patron_fal_midp
 - ▶ csuban.csus_student_patron_smr vs. csuban.csus_student_patron_smr_midp
 - ▶ csuban.csus_student_patron_spr vs. csuban.csus_student_patron_spr_midp
 - ▶ csuban.csus_greek_membership vs. csuban.csus_greek_membership_midp
 - ▶ csuban.csus_sec_delivery_fmt_stg vs. csuban.csus_sec_delivery_fmt_stg_midp

Questions

Midpoint Directory Tables

- ▶ July 2024 and beyond

eID System End of Life – The Why

- eID is a custom developed set of software and integration processes
- In service since 2000 – technology is aging
- Tightly integrated with Banner's Oracle database
- Dependent on Banner availability



COLORADO STATE UNIVERSITY

EIDENTITY: YOUR CSU ELECTRONIC ID

eID System End of Life – The Why

- Identity onboarding is a full day behind HR system entry for new employees at best.
- Provisioning technologies/systems have matured in 20 years.
- CSU providing Identity & Access Management (IAM) for the CSU System.
- Modernize and improve IAM processes
- CSU and CSU Pueblo now share many systems.



COLORADO STATE UNIVERSITY

EIDENTITY: YOUR CSU ELECTRONIC ID

eID End of Life - July 21, 2023

- All data will stop being generated by eID maintenance processes

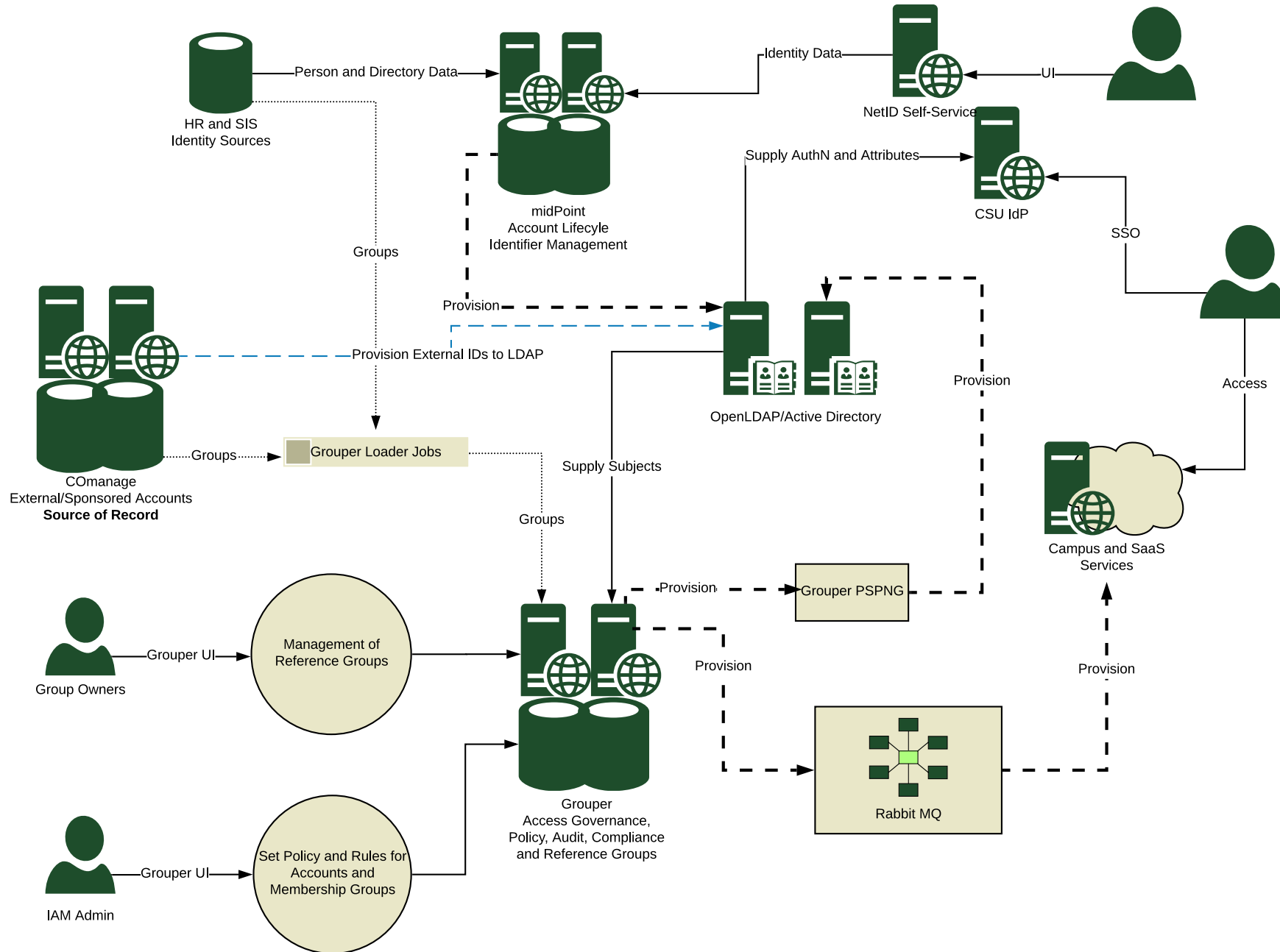


1999, 2000, 2001, 2002, 2003, 2004, 2005, 2006, 2007, 2008, 2009, 2010, 2011, 2012, 2013, 2014, 2015, 2016, 2017, 2018, 2019, 2020, 2021, 2022, 2023, 2024, 2025, 2026, 2027, 2028, 2029, 2030, 2031, 2032, 2033, 2034, 2035, 2036, 2037, 2038, 2039, 2040, 2041, 2042, 2043, 2044, 2045, 2046, 2047, 2048, 2049, 2050, 2051, 2052, 2053, 2054, 2055, 2056, 2057, 2058, 2059, 2060, 2061, 2062, 2063, 2064, 2065, 2066, 2067, 2068, 2069, 2070, 2071, 2072, 2073, 2074, 2075, 2076, 2077, 2078, 2079, 2080, 2081, 2082, 2083, 2084, 2085, 2086, 2087, 2088, 2089, 2090, 2091, 2092, 2093, 2094, 2095, 2096, 2097, 2098, 2099, 2100, 2101, 2102, 2103, 2104, 2105, 2106, 2107, 2108, 2109, 2110, 2111, 2112, 2113, 2114, 2115, 2116, 2117, 2118, 2119, 2120, 2121, 2122, 2123, 2124, 2125, 2126, 2127, 2128, 2129, 2130, 2131, 2132, 2133, 2134, 2135, 2136, 2137, 2138, 2139, 2140, 2141, 2142, 2143, 2144, 2145, 2146, 2147, 2148, 2149, 2150, 2151, 2152, 2153, 2154, 2155, 2156, 2157, 2158, 2159, 2160, 2161, 2162, 2163, 2164, 2165, 2166, 2167, 2168, 2169, 2170, 2171, 2172, 2173, 2174, 2175, 2176, 2177, 2178, 2179, 2180, 2181, 2182, 2183, 2184, 2185, 2186, 2187, 2188, 2189, 2190, 2191, 2192, 2193, 2194, 2195, 2196, 2197, 2198, 2199, 2200, 2201, 2202, 2203, 2204, 2205, 2206, 2207, 2208, 2209, 2210, 2211, 2212, 2213, 2214, 2215, 2216, 2217, 2218, 2219, 2220, 2221, 2222, 2223, 2224, 2225, 2226, 2227, 2228, 2229, 2230, 2231, 2232, 2233, 2234, 2235, 2236, 2237, 2238, 2239, 2240, 2241, 2242, 2243, 2244, 2245, 2246, 2247, 2248, 2249, 2250, 2251, 2252, 2253, 2254, 2255, 2256, 2257, 2258, 2259, 2260, 2261, 2262, 2263, 2264, 2265, 2266, 2267, 2268, 2269, 2270, 2271, 2272, 2273, 2274, 2275, 2276, 2277, 2278, 2279, 2280, 2281, 2282, 2283, 2284, 2285, 2286, 2287, 2288, 2289, 2290, 2291, 2292, 2293, 2294, 2295, 2296, 2297, 2298, 2299, 2300, 2301, 2302, 2303, 2304, 2305, 2306, 2307, 2308, 2309, 2310, 2311, 2312, 2313, 2314, 2315, 2316, 2317, 2318, 2319, 2320, 2321, 2322, 2323, 2324, 2325, 2326, 2327, 2328, 2329, 2330, 2331, 2332, 2333, 2334, 2335, 2336, 2337, 2338, 2339, 2340, 2341, 2342, 2343, 2344, 2345, 2346, 2347, 2348, 2349, 2350, 2351, 2352, 2353, 2354, 2355, 2356, 2357, 2358, 2359, 2360, 2361, 2362, 2363, 2364, 2365, 2366, 2367, 2368, 2369, 2370, 2371, 2372, 2373, 2374, 2375, 2376, 2377, 2378, 2379, 2380, 2381, 2382, 2383, 2384, 2385, 2386, 2387, 2388, 2389, 2390, 2391, 2392, 2393, 2394, 2395, 2396, 2397, 2398, 2399, 2400, 2401, 2402, 2403, 2404, 2405, 2406, 2407, 2408, 2409, 2410, 2411, 2412, 2413, 2414, 2415, 2416, 2417, 2418, 2419, 2420, 2421, 2422, 2423, 2424, 2425, 2426, 2427, 2428, 2429, 2430, 2431, 2432, 2433, 2434, 2435, 2436, 2437, 2438, 2439, 2440, 2441, 2442, 2443, 2444, 2445, 2446, 2447, 2448, 2449, 2450, 2451, 2452, 2453, 2454, 2455, 2456, 2457, 2458, 2459, 2460, 2461, 2462, 2463, 2464, 2465, 2466, 2467, 2468, 2469, 2470, 2471, 2472, 2473, 2474, 2475, 2476, 2477, 2478, 2479, 2480, 2481, 2482, 2483, 2484, 2485, 2486, 2487, 2488, 2489, 2490, 2491, 2492, 2493, 2494, 2495, 2496, 2497, 2498, 2499, 2500, 2501, 2502, 2503, 2504, 2505, 2506, 2507, 2508, 2509, 2510, 2511, 2512, 2513, 2514, 2515, 2516, 2517, 2518, 2519, 2520, 2521, 2522, 2523, 2524, 2525, 2526, 2527, 2528, 2529, 2530, 2531, 2532, 2533, 2534, 2535, 2536, 2537, 2538, 2539, 2540, 2541, 2542, 2543, 2544, 2545, 2546, 2547, 2548, 2549, 2550, 2551, 2552, 2553, 2554, 2555, 2556, 2557, 2558, 2559, 2560, 2561, 2562, 2563, 2564, 2565, 2566, 2567, 2568, 2569, 2570, 2571, 2572, 2573, 2574, 2575, 2576, 2577, 2578, 2579, 2580, 2581, 2582, 2583, 2584, 2585, 2586, 2587, 2588, 2589, 2590, 2591, 2592, 2593, 2594, 2595, 2596, 2597, 2598, 2599, 2600, 2601, 2602, 2603, 2604, 2605, 2606, 2607, 2608, 2609, 2610, 2611, 2612, 2613, 2614, 2615, 2616, 2617, 2618, 2619, 2620, 2621, 2622, 2623, 2624, 2625, 2626, 2627, 2628, 2629, 2630, 2631, 2632, 2633, 2634, 2635, 2636, 2637, 2638, 2639, 2640, 2641, 2642, 2643, 2644, 2645, 2646, 2647, 2648, 2649, 2650, 2651, 2652, 2653, 2654, 2655, 2656, 2657, 2658, 2659, 2660, 2661, 2662, 2663, 2664, 2665, 2666, 2667, 2668, 2669, 2670, 2671, 2672, 2673, 2674, 2675, 2676, 2677, 2678, 2679, 2680, 26

- NetID is the name for the CSU System Identity and Access Management (IAM) system
 - Maintained by CSU Division of IT
- midPoint is the identity management software that is replacing eID processes
 - Part of [InCommon Trusted Access Platform](#) IAM stack
 - Credential store
 - Provisioning engine
- NetID Self-Service will be handled by a light web application
 - Serves CSU and CSU Pueblo

The InCommon logo is partially visible on the right side of the slide, showing the letters 'InCo' in a blue, sans-serif font.

1999, 2000, 2001, 2002, 2003, 2004, 2005, 2006, 2007, 2008, 2009, 2010, 2011, 2012, 2013, 2014, 2015, 2016, 2017, 2018, 2019, 2020, 2021, 2022, 2023, 2024, 2025, 2026, 2027, 2028, 2029, 2030, 2031, 2032, 2033, 2034, 2035, 2036, 2037, 2038, 2039, 2040, 2041, 2042, 2043, 2044, 2045, 2046, 2047, 2048, 2049, 2050, 2051, 2052, 2053, 2054, 2055, 2056, 2057, 2058, 2059, 2060, 2061, 2062, 2063, 2064, 2065, 2066, 2067, 2068, 2069, 2070, 2071, 2072, 2073, 2074, 2075, 2076, 2077, 2078, 2079, 2080, 2081, 2082, 2083, 2084, 2085, 2086, 2087, 2088, 2089, 2090, 2091, 2092, 2093, 2094, 2095, 2096, 2097, 2098, 2099, 2100, 2101, 2102, 2103, 2104, 2105, 2106, 2107, 2108, 2109, 2110, 2111, 2112, 2113, 2114, 2115, 2116, 2117, 2118, 2119, 2120, 2121, 2122, 2123, 2124, 2125, 2126, 2127, 2128, 2129, 2130, 2131, 2132, 2133, 2134, 2135, 2136, 2137, 2138, 2139, 2140, 2141, 2142, 2143, 2144, 2145, 2146, 2147, 2148, 2149, 2150, 2151, 2152, 2153, 2154, 2155, 2156, 2157, 2158, 2159, 2160, 2161, 2162, 2163, 2164, 2165, 2166, 2167, 2168, 2169, 2170, 2171, 2172, 2173, 2174, 2175, 2176, 2177, 2178, 2179, 2180, 2181, 2182, 2183, 2184, 2185, 2186, 2187, 2188, 2189, 2190, 2191, 2192, 2193, 2194, 2195, 2196, 2197, 2198, 2199, 2200, 2201, 2202, 2203, 2204, 2205, 2206, 2207, 2208, 2209, 2210, 2211, 2212, 2213, 2214, 2215, 2216, 2217, 2218, 2219, 2220, 2221, 2222, 2223, 2224, 2225, 2226, 2227, 2228, 2229, 2230, 2231, 2232, 2233, 2234, 2235, 2236, 2237, 2238, 2239, 2240, 2241, 2242, 2243, 2244, 2245, 2246, 2247, 2248, 2249, 2250, 2251, 2252, 2253, 2254, 2255, 2256, 2257, 2258, 2259, 2260, 2261, 2262, 2263, 2264, 2265, 2266, 2267, 2268, 2269, 2270, 2271, 2272, 2273, 2274, 2275, 2276, 2277, 2278, 2279, 2280, 2281, 2282, 2283, 2284, 2285, 2286, 2287, 2288, 2289, 2290, 2291, 2292, 2293, 2294, 2295, 2296, 2297, 2298, 2299, 2300, 2301, 2302, 2303, 2304, 2305, 2306, 2307, 2308, 2309, 2310, 2311, 2312, 2313, 2314, 2315, 2316, 2317, 2318, 2319, 2320, 2321, 2322, 2323, 2324, 2325, 2326, 2327, 2328, 2329, 2330, 2331, 2332, 2333, 2334, 2335, 2336, 2337, 2338, 2339, 2340, 2341, 2342, 2343, 2344, 2345, 2346, 2347, 2348, 2349, 2350, 2351, 2352, 2353, 2354, 2355, 2356, 2357, 2358, 2359, 2360, 2361, 2362, 2363, 2364, 2365, 2366, 2367, 2368, 2369, 2370, 2371, 2372, 2373, 2374, 2375, 2376, 2377, 2378, 2379, 2380, 2381, 2382, 2383, 2384, 2385, 2386, 2387, 2388, 2389, 2390, 2391, 2392, 2393, 2394, 2395, 2396, 2397, 2398, 2399, 2400, 2401, 2402, 2403, 2404, 2405, 2406, 2407, 2408, 2409, 2410, 2411, 2412, 2413, 2414, 2415, 2416, 2417, 2418, 2419, 2420, 2421, 2422, 2423, 2424, 2425, 2426, 2427, 2428, 2429, 2430, 2431, 2432, 2433, 2434, 2435, 2436, 2437, 2438, 2439, 2440, 2441, 2442, 2443, 2444, 2445, 2446, 2447, 2448, 2449, 2450, 2451, 2452, 2453, 2454, 2455, 2456, 2457, 2458, 2459, 2460, 2461, 2462, 2463, 2464, 2465, 2466, 2467, 2468, 2469, 2470, 2471, 2472, 2473, 2474, 2475, 2476, 2477, 2478, 2479, 2480, 2481, 2482, 2483, 2484, 2485, 2486, 2487, 2488, 2489, 2490, 2491, 2492, 2493, 2494, 2495, 2496, 2497, 2498, 2499, 2500, 2501, 2502, 2503, 2504, 2505, 2506, 2507, 2508, 2509, 2510, 2511, 2512, 2513, 2514, 2515, 2516, 2517, 2518, 2519, 2520, 2521, 2522, 2523, 2524, 2525, 2526, 2527, 2528, 2529, 2530, 2531, 2532, 2533, 2534, 2535, 2536, 2537, 2538, 2539, 2540, 2541, 2542, 2543, 2544, 2545, 2546, 2547, 2548, 2549, 2550, 2551, 2552, 2553, 2554, 2555, 2556, 2557, 2558, 2559, 2560, 2561, 2562, 2563, 2564, 2565, 2566, 2567, 2568, 2569, 2570, 2571, 2572, 2573, 2574, 2575, 2576, 2577, 2578, 2579, 2580, 2581, 2582, 2583, 2584, 2585, 2586, 2587, 2588, 2589, 2590, 2591, 2592, 2593, 2594, 2595, 2596, 2597, 2598, 2599, 2600, 2601, 2602, 2603, 2604, 2605, 2606, 2607, 2608, 2609, 2610, 2611, 2612, 2613, 2614, 2615, 2616, 2617, 2618, 2619, 2620, 2621, 2622, 2623, 2624, 2625, 2626, 2627, 2628, 2629, 2630, 2631, 2632, 2633, 2634, 2635, 2636, 2637, 2638, 2639, 2640, 2641, 2642, 2643, 2644, 2645, 2646, 2647, 2648, 2649, 2650, 2651, 2652, 2653, 2654, 2655, 2656, 2657, 2658, 2659, 2660, 2661, 2662, 2663, 2664, 2665, 2666, 2667, 2668, 2669, 2670, 2671, 2672, 2673, 2674, 2675, 2676, 2677, 2678, 2679, 2680, 26



From eID to NetID: What will change?



NetID

- **New** NetIDs will not look like eIDs
- The format of a NetID is an uppercase C followed by your 9-digit CSU ID, for example: **C812345678**
- Starting mid-July 2023, NetIDs can be used at both CSU and CSU Pueblo
- Web self-service for NetIDs has been improved
- The location of managing your CSU System NetID will be at a different URL



Directory Tables

CHANGES FOR MIDPOINT

New Directory Tables in Banner

MIDP DIR PERSON INFO

Keys – NETID (Unique)

Keys to other systems

CSU_ID, PIDM – Banner

HR_PERSON_ID – HR, Associates

Note: Not MEPed

One row per person

MIDP DIR EMP ASSOC INFO

NETID

CSU_ID

PIDM

HR_ID

ASSIGNMENT_NUMBER

VPDI_CODE

Note: MEPed table

One row per person, per institution,
per assignment number

MIDP DIR STUDENT INFO

NETID

CSU_ID

PIDM

VPDI_CODE

Note: MEPed table

One row per person, per institution

MIDP_DIRECTORY pulls together the data in the three tables above and flattens it. MIDP_DIR_EMP_ASSOC_INFO can have multiple rows – one for each HR assignment at an institution. This data is ‘flattened’ to one row per person. MIDP_DIRECTORY is the replacement for WEID_DIR_PERSON_00.

MIDP DIRECTORY

Keys – NETID, VPDI_CODE (Unique)

MIDPOINT_ID, VPDI_CODE (Unique)

CSU_ID, VPDI_CODE (Unique)

PIDM, VPDI_CODE (Unique)

HR_ID, VPDI_CODE (NotUnique) some nulls

Note: MEPed table

One row per person, per institution

WEID_DIR_PERSON_00 vs MIDP_DIRECTORY

Columns with Name Changes in MIDP_DIRECTORY

➤ ENAME	--> NETID
➤ PRIVACY_EMAIL_ADDRESS	--> PRIVACY_EMAIL
➤ INT_REF_ID_HR	--> HR_ID
➤ INT_REF_ID_ARIES	--> PIDM
➤ INT_REF_ID_ASSOC	--> HR_ID
➤ ARIES_DATA_FOUND	--> STUDENT_DATA_FOUND
➤ PRIVACY_PRINTED_DIR	--> PRIVACY_FERPA
➤ PRIVACY_NAME	--> PRIVACY_FERPA
➤ STUDENT_PID	--> PIDM
➤ PRIVACY_STUDENT_PID	--> PRIVACY_FERPA
➤ STUDENT_CLASSIFICATION	--> STUDENT_CLASS_BOAP_DESC
➤ STUDENT_CLASSIFICATION_DETAIL	--> STUDENT_CLASS_BOAP_DETAIL
➤ PRIVACY_STUDENT_CLASSIFICATION	--> PRIVACY_STUDENT_CLASS

WEID_DIR_PERSON_00 vs MIDP_DIRECTORY

Columns with Name Changes in MIDP_DIRECTORY

- LIVE_LAG_START_DATE --> NETID_EXP_CYCLE_START_DATE
- DEAD_LAG_START_DATE --> NETID_EXP_CYCLE_END_DATE
- ACTIVE_FLAG_EIDDATA --> NETID_ACTIVE_FLAG
- STUDENT_PROGRAM_OF_STUDY_CODE --> STUDENT_PROGRAM
- STUDENT_PROGRAM_OF_STUDY_DESC --> STUDENT_PROGRAM_DESC
- WEID_PIDM --> PIDM
- PROFESSIONAL_LAST_NAME --> PREFERRED_LAST_NAME

- All columns that started with 'EMPLOYEE' now start with 'HR'
 - For example –
 - EMPLOYEE_PID --> HR_ID
 - EMPLOYEE_TYPE --> HR_TYPE
 - EMPLOYEE_TITLE --> HR_TITLE

WEID_DIR_PERSON_00 vs MIDP_DIRECTORY

New Columns in MIDP_DIRECTORY

- NetID_ACTIVE_FLAG (Y or N)
- MIDPOINT_ID
 - Registry ID from midPoint
- CREATION_DATE
 - Date this NetID was created by midPoint
- HR_TYPE is employee code, HR_TYPE_DESC is long description
- HR_STATUS – A (active), T(terminated)
- HR_STATUS_DATE
- PRIMARY_ASSIGNMENT_FLAG – Y or null
- ASSIGNMENT_STATUS – long description – examples:
 - Associate - Active
 - Retirement - Payroll Only
 - Emeritus - Payroll Only
 - Active Assignment
 - Terminate Assgn - Payroll Only
- MIDP_DIRECTORY_VPDI_CODE = CSU or CSUP

WEID_DIR_PERSON_00 vs MIDP_DIRECTORY

When are ID's created?

- In the eID system, you did not get an eID until you requested one.
- All employees were added to WEID_DIR_PERSON_00, even if they had not requested an eID yet (they have no ename).
- In midPoint, your midPoint ID/NetID are generated when you qualify as an employee, student, applicant, or associate.
 - The person still has to activate their account, but it is created up front.
- In MIDP_DIRECTORY, you will see all accounts that have been generated but you will need to look at the NETID_ACTIVE_FLAG to see whether it is active or not.

WEID_DIR_PERSON_00

How long will it be available?

- ▶ In mid-July of 2023, Fort Collins will convert to midPoint. At that time, the WEID_DIR_PERSON_00 table will be deleted and replaced by a view with the same name that points to the MIDP_WEID_DIR_PERSON table.
 - ▶ This means that anyone/anything using WEID_DIR_PERSON_00 should not be impacted when we convert to midPoint.
- ▶ The MIDP_WEID_DIR_PERSON table is intended to be a temporary replacement during a “transition” period. This will allow staff time to make the necessary changes to their logic, programs, processes, etc. This table will be

Live Lag/Dead Lag versus NetID Life Cycles

- ▶ In eID, there is a Live Lag start date and a Dead Lag start date
 - ▶ Live Lag begins when a person has no active affiliations (Student, Applicant, Employee, Associate association). A person is given a grace period, when their eID is kept active”, based on what associations
 - ▶ 30-45 days for an Applicant
 - ▶ 1 year for a Student
 - ▶ 30 days for an employee
 - ▶ 30 days for an associate
 - ▶ So each association a person has to be tracked as to when it ended and how long of a “live lag” time frame it gets in order to determine the maximum time frame to keep them “alive” before their account is inactivated.
 - ▶ Dead Lag
 - ▶ When an eID is no longer kept active
- ▶ In midpoint the life cycle process is being simplified to a person being kept active for 1 year since a person’s last active association with the Universities (currently Fort Collins or Pueblo) as a Student, Applicant, Employee, or Associate.
- ▶ In either case a Retiree gets to keep their eID or midPoint account active for as long as they live.

Change to Student Classification

- ▶ For eID, Student Classification (Freshman, Sophomore, etc) is calculated using a dynamic function that uses a lot of system resources.
 - ▶ This results in lengthy run times in our nightly eID processes.
 - ▶ This value is not stored anywhere in Banner. It is, however, stored in a table in the ODS.
- ▶ It was decided that we would create a table in Banner that the ODS would update on a nightly basis.
 - ▶ This new table will be used to populate the student classification fields in MIDP_DIRECTORY.
 - ▶ The new process is still in development so these fields will be blank until we have the new process in place.

WEID_DIR_PERSON_00			MIDP_DIRECTORY		
COLUMN_NAME	DATATYPE		COLUMN_NAME	DATATYPE	
ENAME	VARCHAR2(35)		NETID	VARCHAR2(25)	MidPoint ID for a person
EMAIL_ADDRESS	VARCHAR2(70)				
PROPER_NAME_ADDRESS	VARCHAR2(100)		PROPER_NAME_EMAIL	VARCHAR2(70)	MidPoint email address for this Person/Institution
PRIVACY_EMAIL_ADDRESS	VARCHAR2(1)		PRIVACY_EMAIL	VARCHAR2(1)	EMAIL Privacy (Y/N)
CSU_ID	VARCHAR2(9)		CSU_ID	VARCHAR2(9)	Banner external ID number used for system access, ID cards, and reporting
INT_REF_ID_EIDDATA	VARCHAR2(7)				
INT_REF_ID_HR	NUMBER(9)		HR_ID	VARCHAR2(30)	Personal Identifier in the HR system of record
INT_REF_ID_ARIES	VARCHAR2(8)		PIDM	NUMBER(8)	Banner internal ID number for a person
INT_REF_ID_ISIS	NUMBER(8)				
INT_REF_ID_ASSOC	VARCHAR2(7)		HR_ID	VARCHAR2(30)	Personal Identifier in the HR system of record
HRS_DATA_FOUND	VARCHAR2(1)		HR_DATA_FOUND	VARCHAR2(1)	Y if HR data exists
ARIES_DATA_FOUND	VARCHAR2(1)		STUDENT_DATA_FOUND	VARCHAR2(1)	Y if Student data exists
ISIS_DATA_FOUND	VARCHAR2(1)				
ASSOC_DATA_FOUND	VARCHAR2(1)				
PRIVACY_PRINTED_DIR	VARCHAR2(1)		PRIVACY_FERPA	VARCHAR2(1)	FERPA Privacy (Y/N)
LAST_NAME	VARCHAR2(35)		LAST_NAME	VARCHAR2(60)	Last Name of the person
FIRST_NAME	VARCHAR2(75)		FIRST_NAME	VARCHAR2(60)	First Name of the person
MIDDLE_NAME	VARCHAR2(30)		MIDDLE_NAME	VARCHAR2(60)	Middle Name or Initial of the person
PRIVACY_NAME	VARCHAR2(1)		PRIVACY_FERPA	VARCHAR2(1)	FERPA Privacy (Y/N)
STREET_1	VARCHAR2(100)		STREET_1	VARCHAR2(75)	First line of the address associated with the person.
STREET_2	VARCHAR2(100)		STREET_2	VARCHAR2(75)	Second line of the address associated with the person.
CITY	VARCHAR2(70)		CITY	VARCHAR2(50)	City associated with the address of the person.
STATE	VARCHAR2(35)		STATE	VARCHAR2(3)	State Code associated with the address of the person.
COUNTRY	VARCHAR2(35)		COUNTRY	VARCHAR2(5)	Country Code associated with the address of the person.
ZIPCODE	VARCHAR2(40)		ZIPCODE	VARCHAR2(30)	Zipcode associated with the address of the person.
PRIVACY_ADDRESS	VARCHAR2(1)		PRIVACY_ADDRESS	VARCHAR2(1)	Address privacy (Y/N)
PHONE	VARCHAR2(15)		PHONE	VARCHAR2(30)	Phone number associated with the person.
PRIVACY_PHONE	VARCHAR2(1)		PRIVACY_PHONE	VARCHAR2(1)	Phone number privacy (Y/N)
BIRTH_DATE	DATE				

<i>WEID_DIR_PERSON_00</i>		<i>MIDP_DIRECTORY</i>		
COLUMN_NAME	DATATYPE	COLUMN_NAME	DATATYPE	
ENAME	VARCHAR2(35)	NETID	VARCHAR2(25)	MidPoint ID for a person
EMAIL_ADDRESS	VARCHAR2(70)			
PROPER_NAME_ADDRESS	VARCHAR2(100)	PROPER_NAME_EMAIL	VARCHAR2(70)	MidPoint email address for this Person/Institution
PRIVACY_EMAIL_ADDRESS	VARCHAR2(1)	PRIVACY_EMAIL	VARCHAR2(1)	EMAIL Privacy (Y/N)
CSU_ID	VARCHAR2(9)	CSU_ID	VARCHAR2(9)	Banner external ID number used for system access, ID cards, and reporting
INT_REF_ID_EIDDATA	VARCHAR2(7)			
INT_REF_ID_HR	NUMBER(9)	HR_ID	VARCHAR2(30)	Personal Identifier in the HR system of record
INT_REF_ID_ARIES	VARCHAR2(8)	PIDM	NUMBER(8)	Banner internal ID number for a person
INT_REF_ID_ISIS	NUMBER(8)			
INT_REF_ID_ASSOC	VARCHAR2(7)	HR_ID	VARCHAR2(30)	Personal Identifier in the HR system of record
HRS_DATA_FOUND	VARCHAR2(1)	HR_DATA_FOUND	VARCHAR2(1)	Y if HR data exists
ARIES_DATA_FOUND	VARCHAR2(1)	STUDENT_DATA_FOUND	VARCHAR2(1)	Y if Student data exists
ISIS_DATA_FOUND	VARCHAR2(1)			
ASSOC_DATA_FOUND	VARCHAR2(1)			
PRIVACY_PRINTED_DIR	VARCHAR2(1)	PRIVACY_FERPA	VARCHAR2(1)	FERPA Privacy (Y/N)
LAST_NAME	VARCHAR2(35)	LAST_NAME	VARCHAR2(60)	Last Name of the person
FIRST_NAME	VARCHAR2(75)	FIRST_NAME	VARCHAR2(60)	First Name of the person
MIDDLE_NAME	VARCHAR2(30)	MIDDLE_NAME	VARCHAR2(60)	Middle Name or Initial of the person
PRIVACY_NAME	VARCHAR2(1)	PRIVACY_FERPA	VARCHAR2(1)	FERPA Privacy (Y/N)
STREET_1	VARCHAR2(100)	STREET_1	VARCHAR2(75)	First line of the address associated with the person.
STREET_2	VARCHAR2(100)	STREET_2	VARCHAR2(75)	Second line of the address associated with the person.
CITY	VARCHAR2(70)	CITY	VARCHAR2(50)	City associated with the address of the person.
STATE	VARCHAR2(35)	STATE	VARCHAR2(3)	State Code associated with the address of the person.
COUNTRY	VARCHAR2(35)	COUNTRY	VARCHAR2(5)	Country Code associated with the address of the person.
ZIPCODE	VARCHAR2(40)	ZIPCODE	VARCHAR2(30)	Zipcode associated with the address of the person.
PRIVACY_ADDRESS	VARCHAR2(1)	PRIVACY_ADDRESS	VARCHAR2(1)	Address privacy (Y/N)
PHONE	VARCHAR2(15)	PHONE	VARCHAR2(30)	Phone number associated with the person.
PRIVACY_PHONE	VARCHAR2(1)	PRIVACY_PHONE	VARCHAR2(1)	Phone number privacy (Y/N)
BIRTH_DATE	DATE			

WEID_DIR_PERSON_00		MIDP_DIRECTORY		
COLUMN_NAME	DATATYPE	COLUMN_NAME	DATATYPE	
PRIVACY_STUDENT_COLLEGE	VARCHAR2(1)	PRIVACY_STUDENT_COLLEGE	VARCHAR2(1)	Privacy College (Y/N)
STUDENT_DEPARTMENT	VARCHAR2(35)	STUDENT_DEPARTMENT	VARCHAR2(30)	Description of the Department related to the student.
STUDENT_DEPARTMENT_CODE	VARCHAR2(4)	STUDENT_DEPARTMENT_CODE	VARCHAR2(4)	Department code related to the student.
PRIVACY_STUDENT_DEPARTMENT	VARCHAR2(1)	PRIVACY_STUDENT_DEPARTMENT	VARCHAR2(1)	Privacy Department (Y/N)
STUDENT_MAJOR	VARCHAR2(30)	STUDENT_MAJOR	VARCHAR2(30)	Description of the major code related to the student.
STUDENT_MAJOR_CODE	VARCHAR2(12)	STUDENT_MAJOR_CODE	VARCHAR2(4)	Major code related to the student.
PRIVACY_STUDENT_MAJOR	VARCHAR2(1)	PRIVACY_STUDENT_MAJOR	VARCHAR2(1)	Privacy student major (Y/N)
LIVE_LAG_START_DATE	DATE	NETID_EXP_CYCLE_START_DATE	DATE	Start Date of expiring this NETID
DEAD_LAG_START_DATE	DATE	NETID_EXP_CYCLE_END_DATE	DATE	End Date of expiring this NETID
HRS_INACTIVE_DATE	DATE			
ARIES_INACTIVE_DATE	DATE			
ISIS_INACTIVE_DATE	DATE			
ASSOC_INACTIVE_DATE	DATE			
WEB_PAGE	VARCHAR2(70)			
ACCOUNT_TYPE	VARCHAR2(1)			
ACTIVE_FLAG_EIDDATA	VARCHAR2(1)	NETID_ACTIVE_FLAG	VARCHAR2(1)	Is NETID Active or not (Y/N)
ACTIVE_FLAG_EMAIL	VARCHAR2(1)	ACTIVE_FLAG_EMAIL	VARCHAR2(1)	Is the PROPER_NAME_EMAIL active (Y/N)
ADMIN_ACCT_FLAG	VARCHAR2(1)			
LAST_UPDATE	DATE	LAST_UPDATE	DATE	Date this Netid was last updated by midPoint
PREFERRED_FIRST_NAME	VARCHAR2(35)	PREFERRED_FIRST_NAME	VARCHAR2(60)	Preferred First Name of the person
STUDENT_PROGRAM_OF_STUDY_CODE	VARCHAR2(12)	STUDENT_PROGRAM	VARCHAR2(30)	A program code which will represent a specific university program.
STUDENT_PROGRAM_OF_STUDY_DESC	VARCHAR2(30)	STUDENT_PROGRAM_DESC	VARCHAR2(100)	Program description which further describes program code.
STUDENT_ENROLLED_INDICATION	VARCHAR2(1)			
WEID_PIDM	NUMBER(8)	PIDM	NUMBER(8)	Banner internal ID number for a person
EMPLOYEE_MAIL_CODE	VARCHAR2(8)	HR_MAIL_CODE	VARCHAR2(8)	Code related to where to send mail to the employee/associate
EMPLOYEE_DEPARTMENT_LONG	VARCHAR2(120)	HR_DEPARTMENT_LONG	VARCHAR2(60)	The long description of the Department of the Employee/Associate
PROFESSIONAL_LAST_NAME	VARCHAR2(60)	PREFERRED_LAST_NAME	VARCHAR2(60)	Preferred Last Name of the person



ODS

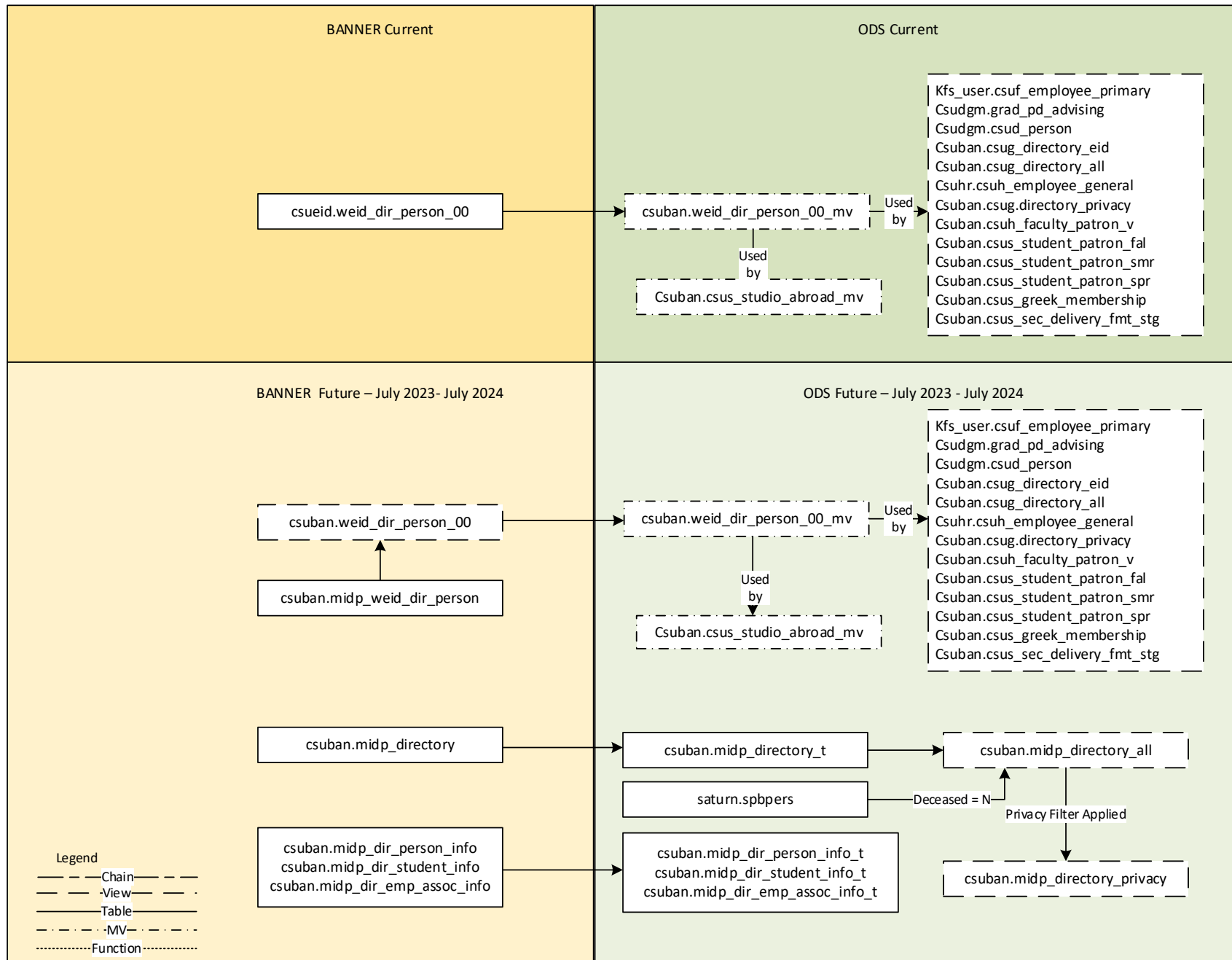
WHAT'S NEW AND WHAT'S CHANGING

CSUG Directory% View Transition

The CSUG_DIRECTORY% views are based on WEID_DIR_PERSON_00

In mid-July of 2023 Fort Collins will transition from eid to midpoint

- ▶ The Banner WEID_DIR_PERSON_00 table will be deleted and replaced by a view with the same name that points to the MIDP_WEID_DIR_PERSON table.
 - ▶ is means that anyone/anything using WEID_DIR_PERSON_00 should not be impacted when we convert to midPoint.
- ▶ The MIDP_WEID_DIR_PERSON table is to be a replacement during a “transition” period that allows logic to not have to immediately be changed to use the new midpoint tables. Instead staff can have time to change their logic.



Current
ODS
to
Temporary
Future
ODS till
June 2024

Directory Tables in BANNER are Replicated in the ODS to build new MIDP_DIRECTORY% Views

Banner MIDP Tables

MIDP_DIRECTORY

MIDP_DIR_PERSON_INFO

MIDP_DIR_STUDENT_INFO

MIDP_DIR_EMP_ASSOC_INFO

ODS MIDP Tables

→ MIDP_DIRECTORY_T

→ MIDP_DIR_PERSON_INFO_T

→ MIDP_DIR_STUDENT_INFO_T

→ MIDP_DIR_EMP_ASSOC_INFO_T

New Directory Views in Banner

Old EID Views

- ▶ CSUG_DIRECTORY_ALL
- ▶ CSUG_DIRECTORY_PRIVACY
- ▶ CSUG_DIRECTORY_EID

New MIDP Views

- MIDP_DIRECTORY_ALL
- MIDP_DIRECTORY_PRIVACY

BANNER Future – July 2024

ODS Future – July 2024

csuban.midp_dir_person_info
csuban.midp_dir_student_info
csuban.midp_dir_emp_assoc_info

csuban.midp_dir_person_info_t
csuban.midp_dir_student_info_t
csuban.midp_dir_emp_assoc_info_t

Kfs_user.csuf_employee_primary
Csudgm.csu_active_data_steward
Csudgm.grad_pd_advising
Csudgm.csud_person
Csuhr.csuhr_employee_general
Csuhr.csuhr_fmhis_emp_list
Csuban.csuhr_faculty_patron_v
Csuban.csuhr_student_patron_fal
Csuban.csuhr_student_patron_smr
Csuban.csuhr_student_patron_spr
Csuban.csuhr_greek_membership
Csuban.csuhr_sec_delivery_fmt_stg
Csuban.csuhr_studio_abroad_mv

csuban.midp_directory

csuban.midp_directory_t

saturn.spbpers

csuban.midp_directory_all

Deceased = N

Privacy Filer Applied

csuban.midp_directory_privacy

Csudgm.csud_research_prpsl

Legend

---View---
---Table---
---MV---
.....Function.....

Future
ODS
2024
and
Beyond